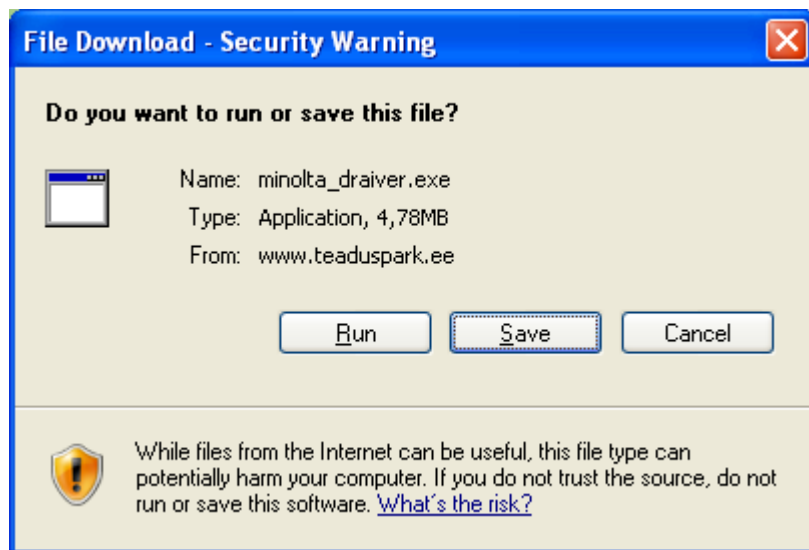
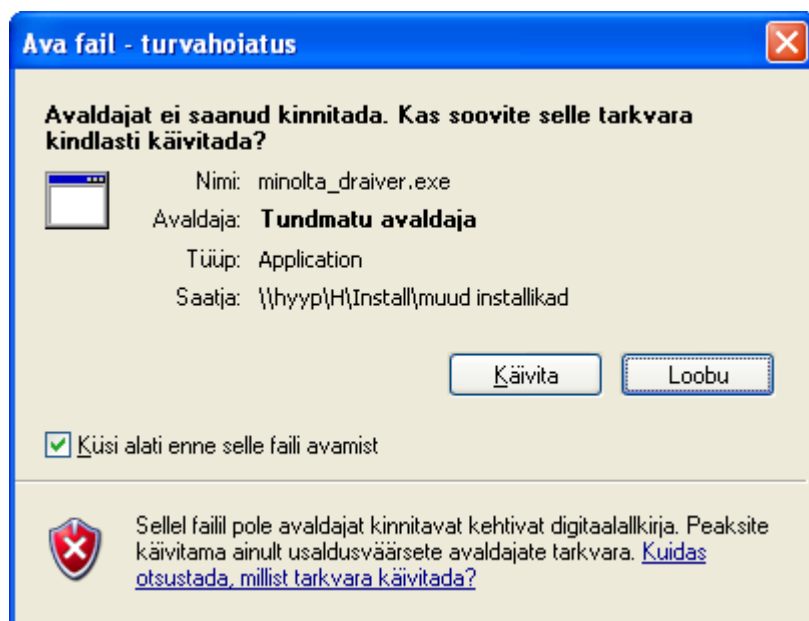


Kõigepealt tõmmake printeri draiver aadressilt http://www.teaduspark.ee/minolta_driver.exe
Valige “Save” ning salvestage fail kuhugi kus te selle üles leiate.

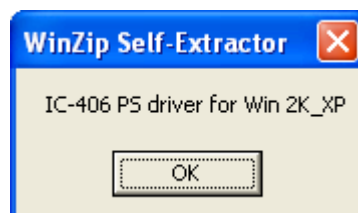


Tehke topeltklõps faili “minolta_driver.exe” peal.

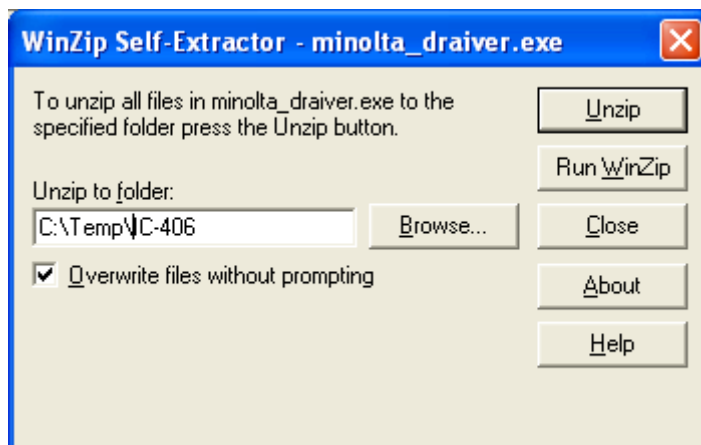
Windows XP turvahoiatuse peale valige “Käivita”



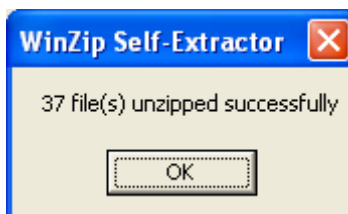
Vajutage “OK”



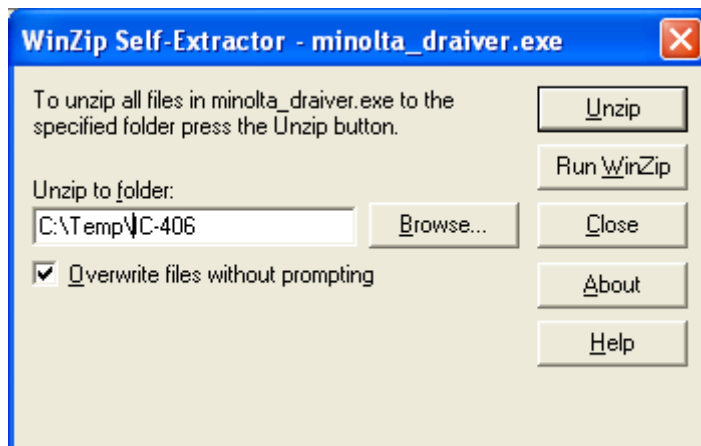
Valige lahtipakkimise aadressiks "C:\Temp". Vajutage "Unzip"



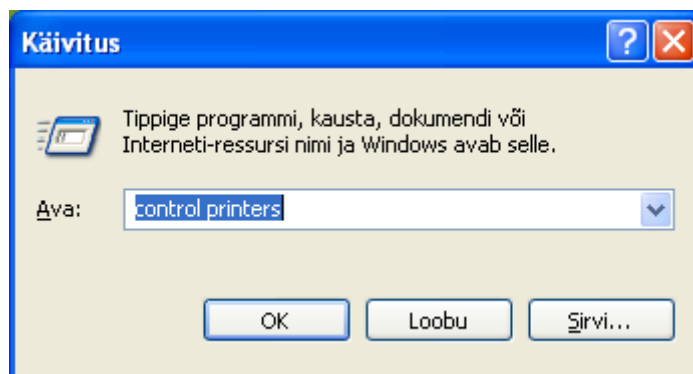
Vajutage "OK"



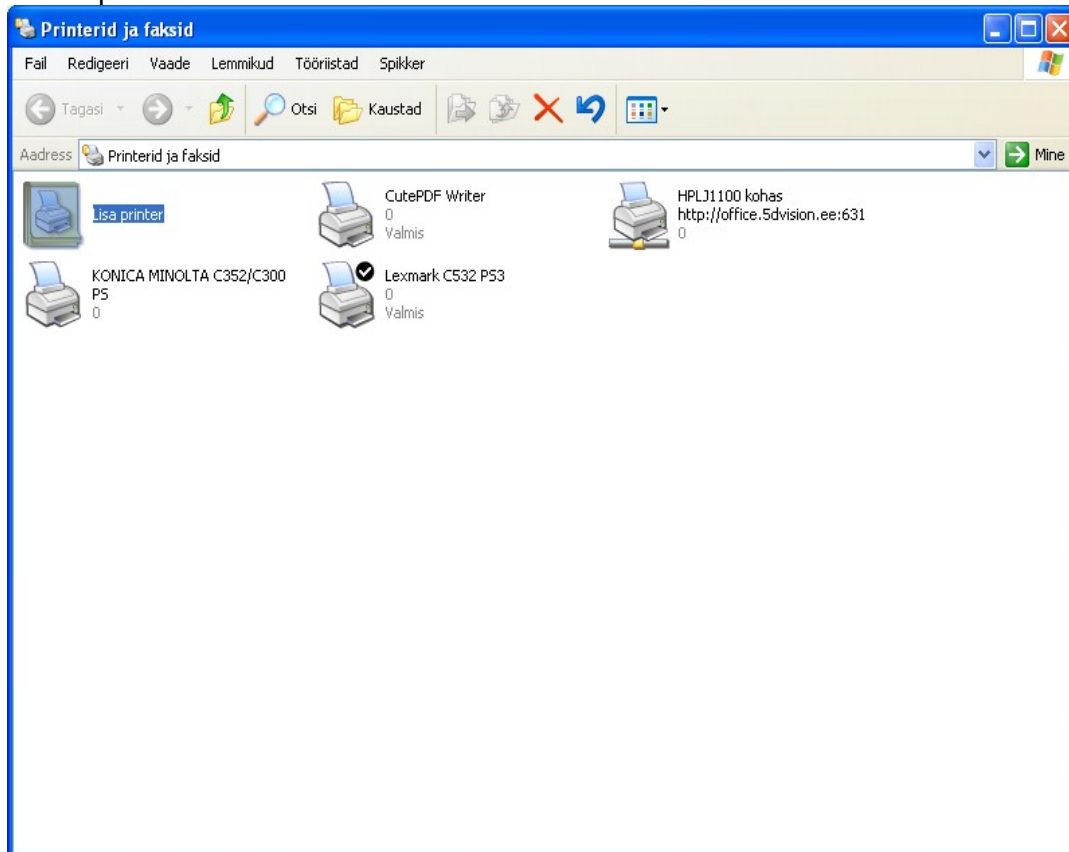
Nüüd vajutage "Close"



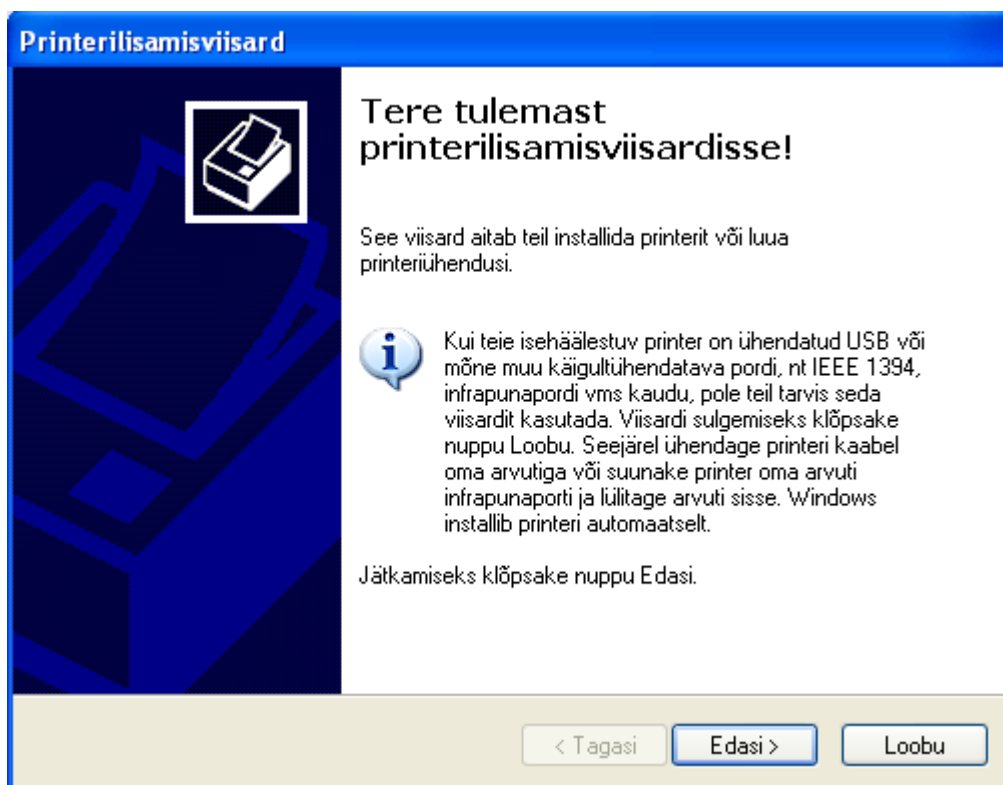
Vajutage "Start" -> "Käivita..." ja kirjutage "Ava:" reale "control printers"



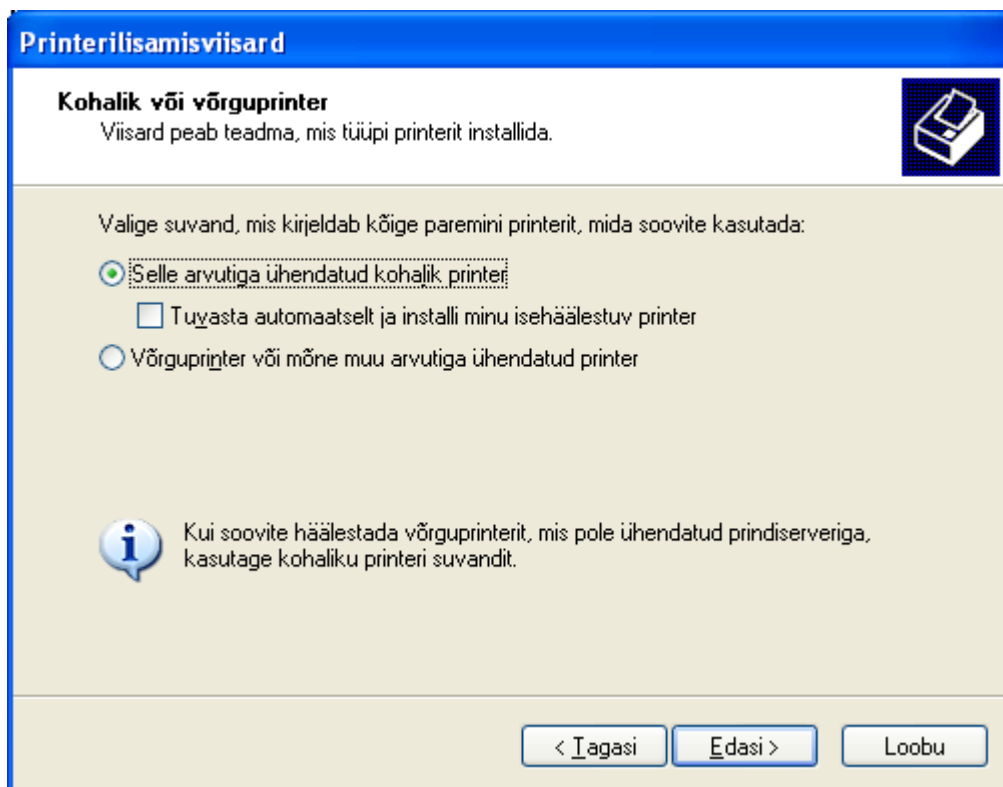
Ilmub järgmine aken.
Vajutage “Lisa printer”



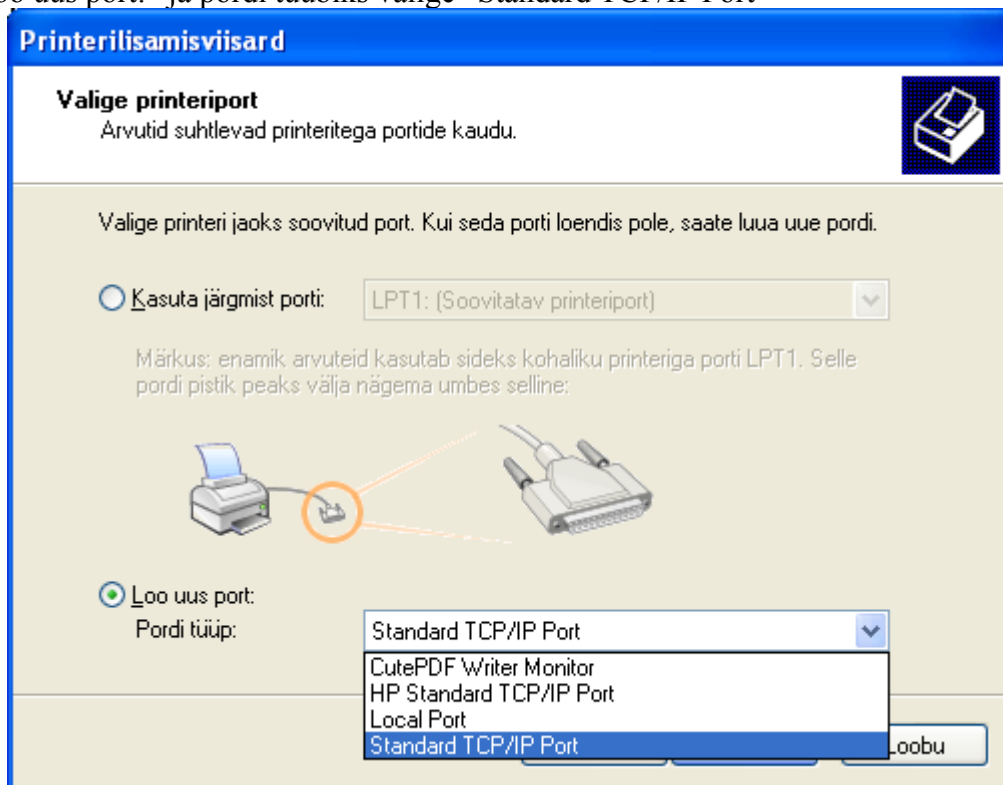
Vajutage “Edasi”



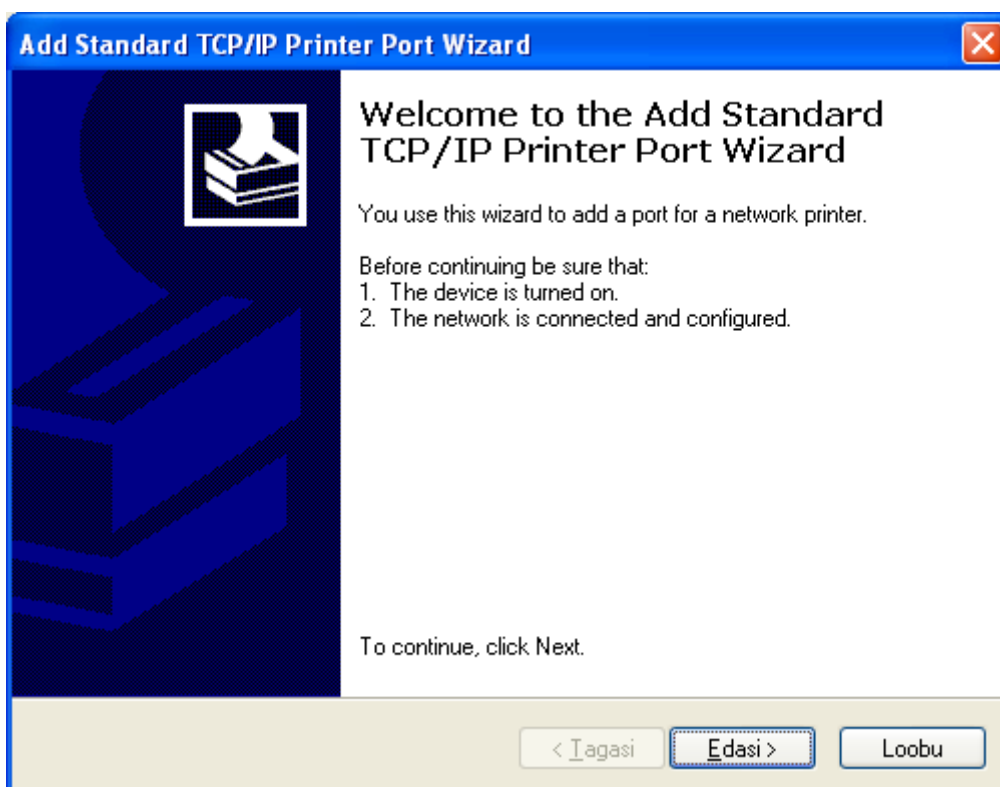
Võtke maha linnuke “Tuvasta automaatselt ja installeerige minu isehäälestuv printer” eest.



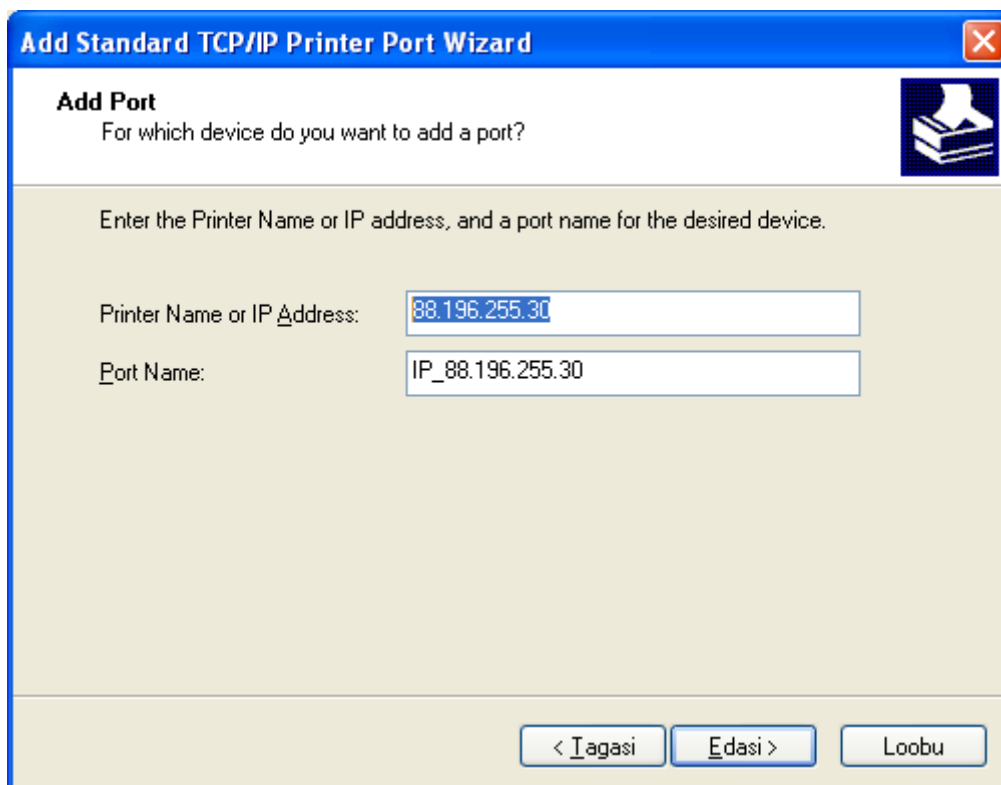
Valige “Loo uus port:” ja pordi tüübiks valige “Standard TCP/IP Port”



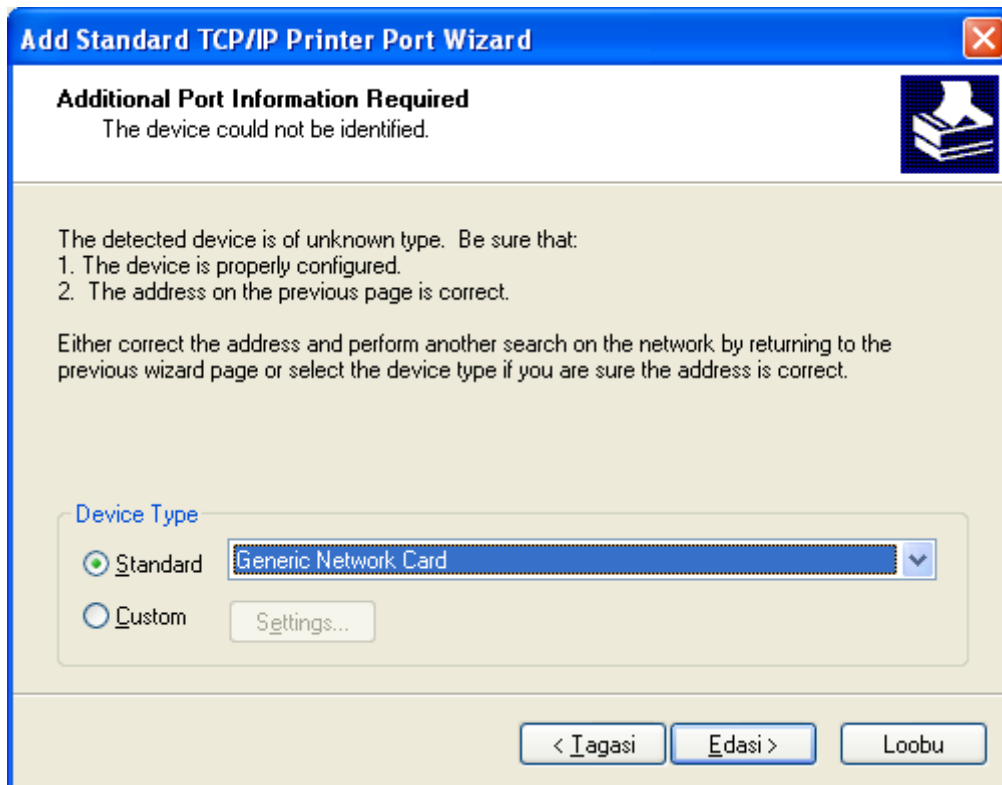
Järgmiseks valige “Edasi”



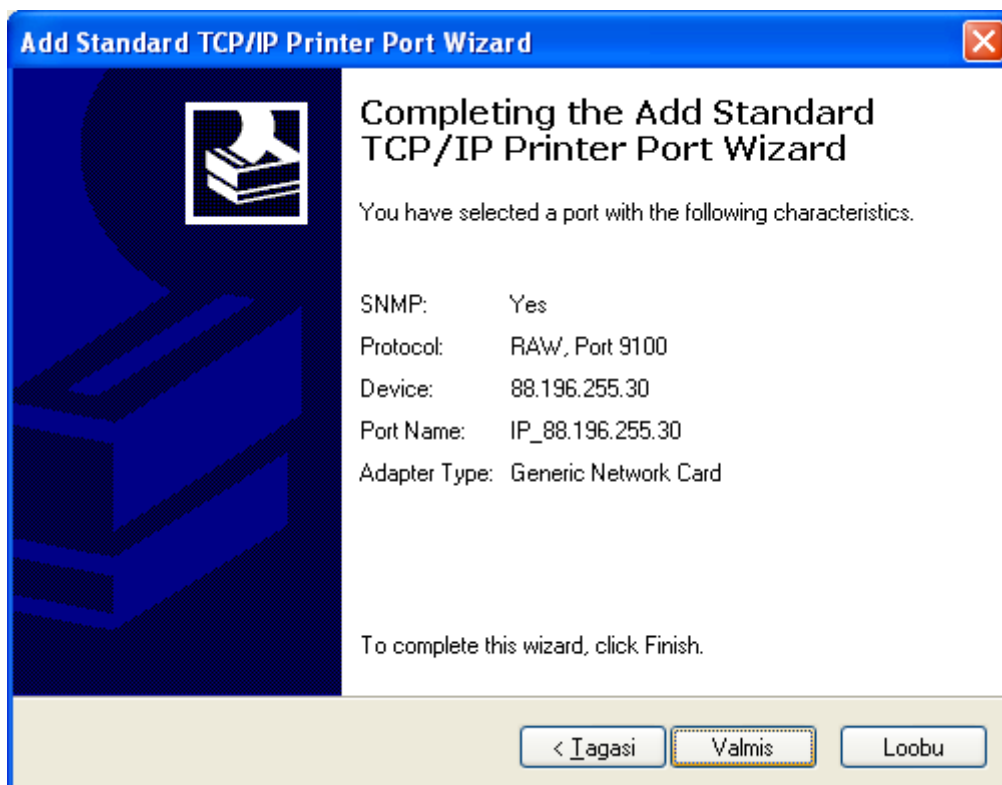
Sisestage “Printer Name or IP Adress:” väljale printeri IP (“88.196.255.30” majas Riia 185A või “88.196.255.29” majas Riia 181)



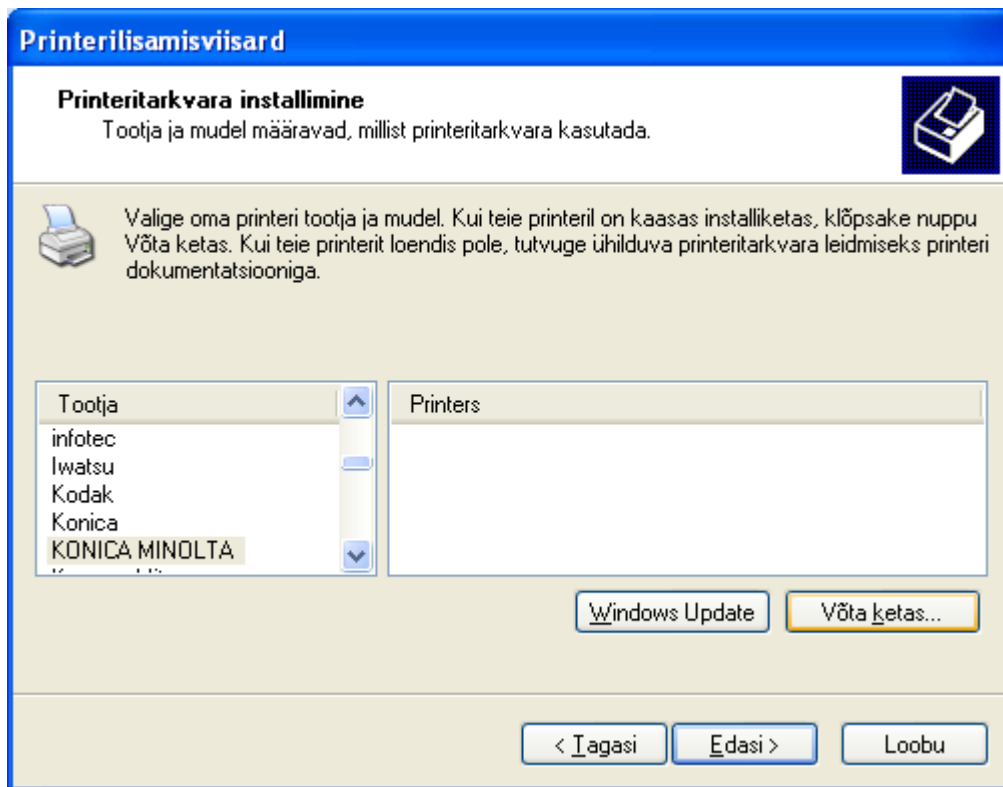
Vajutage “Edasi”



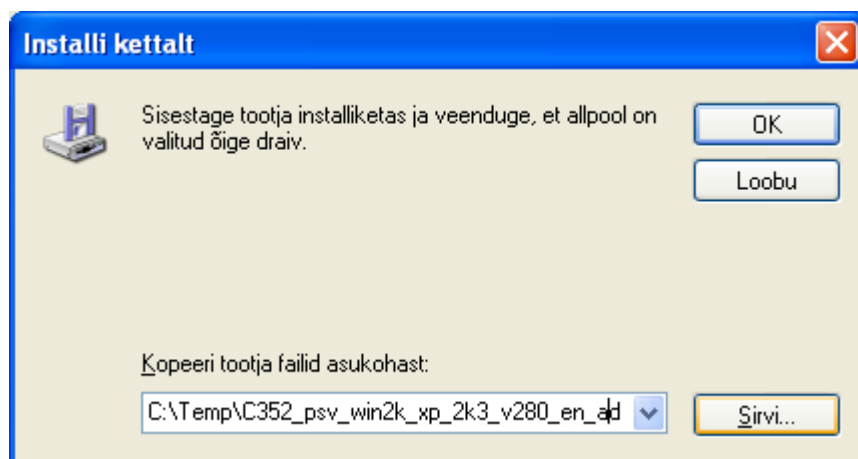
Vajutage “Valmis”



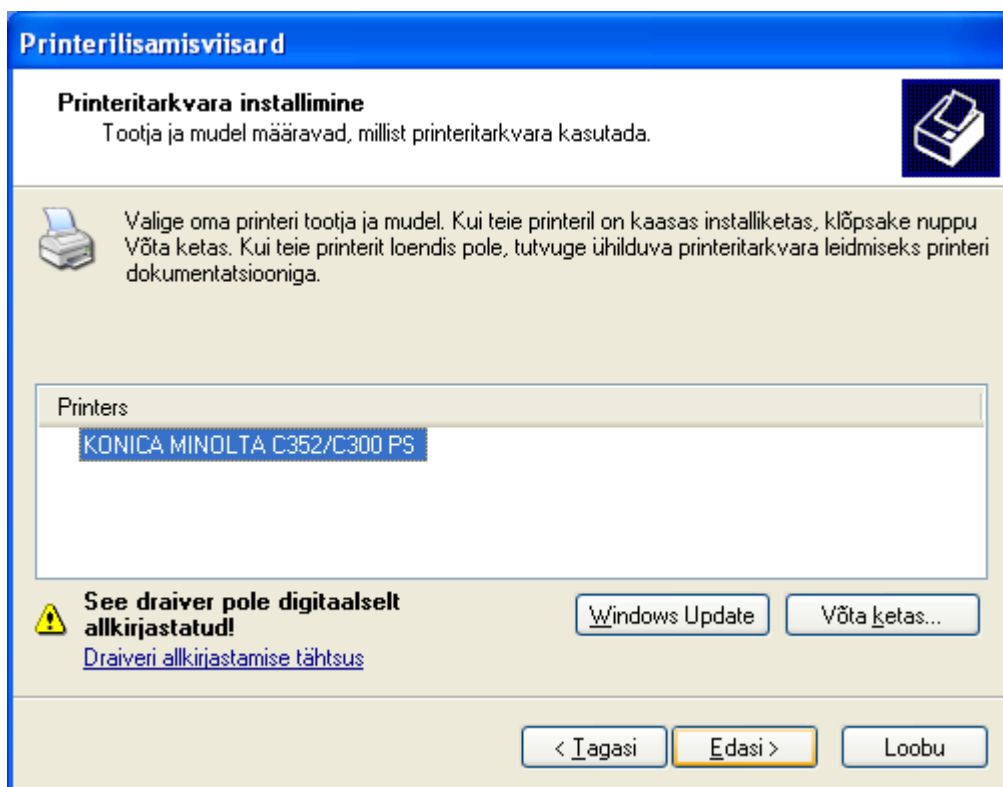
Oodake hetk kuni laetakse uus aken. Nüüd valige “Võta ketas...”



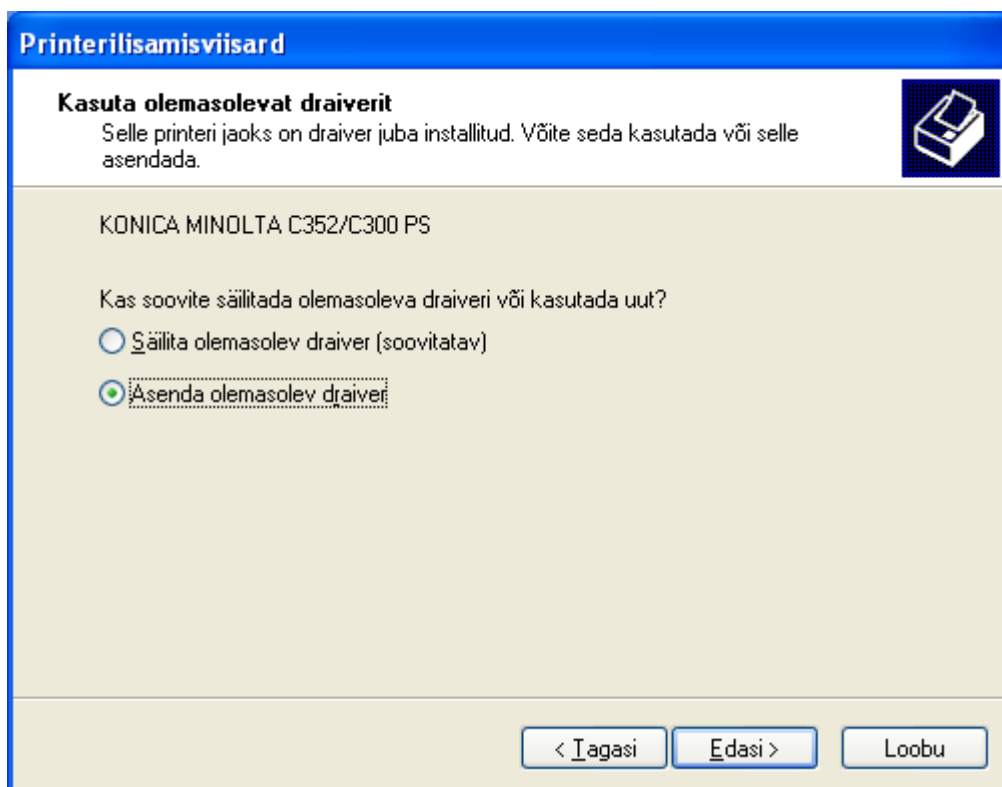
Otsige üles kuhu pakkisite lahti eelnevalt tõmmatud draiveri failid (C:\Temp\IC-406)



Vajuta “Edasi”



Valige “Asenda olemasolev draiver” (Seda akent ei pruugi ette tulla, vaata edasi)



Printeri nimi on vaikimisi olemas, valige kindlasti allpool esitatud küsimusele “Kas soovite kasutada seda printerit vaikeprinterina?” vastuseks “Ei” ning vajutage “Edasi”

Printerilisasamisviisard

Pange oma printerile nimi
Teil tuleb sellele printerile määrata mingi nimi.

Tippige selle printeri nimi. Mõni programm ei toeta printeri- ja serverinimede kombinatsioone, kus on üle 31 märgi. Oleks hea, kui nimed oleksid võimalikult lühikesed.

Printeri nimi:
KONICA MINOLTA C352/C300 PS

Kas soovite kasutada seda printerit vaikeprinterina?

Jah

Ei

< Tagasi Edasi > Loobu

Valige “Ära anna seda printerit ühiskasutusse” ning vajutage “Edasi”

Printerilisasamisviisard

Printeri ühiskasutus
Seda printerit võite kasutada ühiselt teiste võrgukasutajatega.

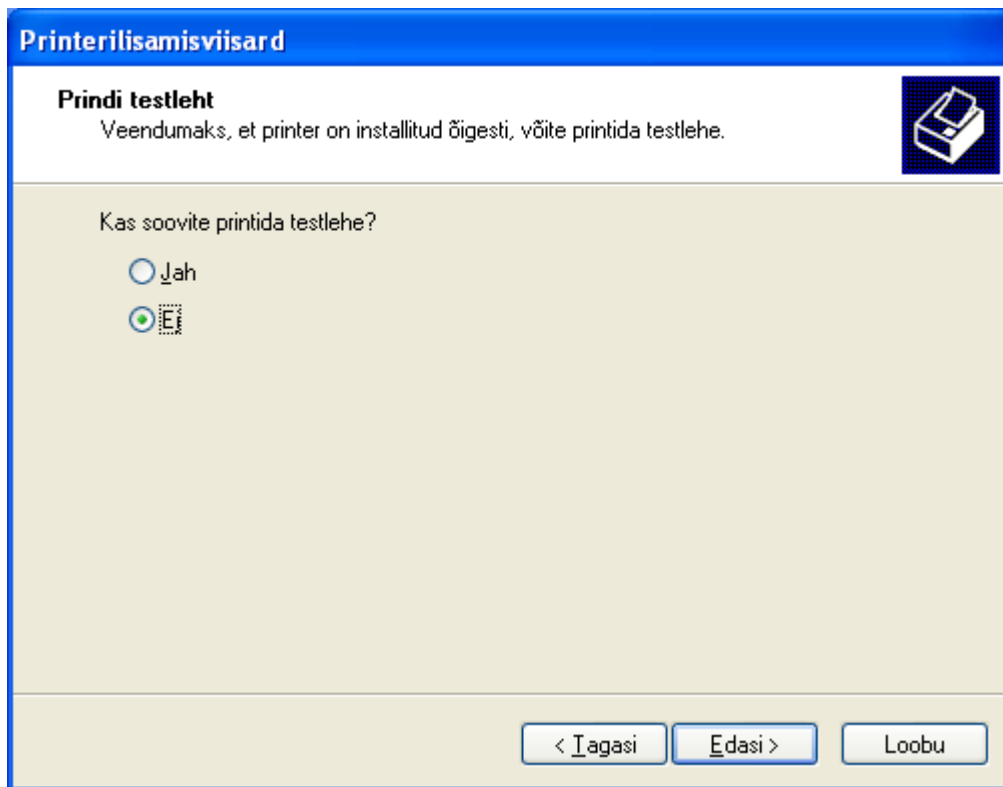
Kui soovite lubada printeri ühiskasutust, tuleb teil anda sellele ühiskasutusnimi. Võite kasutada etteantud nime või valida uue. Ühiskasutusnime näevad kõik võrgukasutajad.

Ära anna seda printerit ühiskasutusse

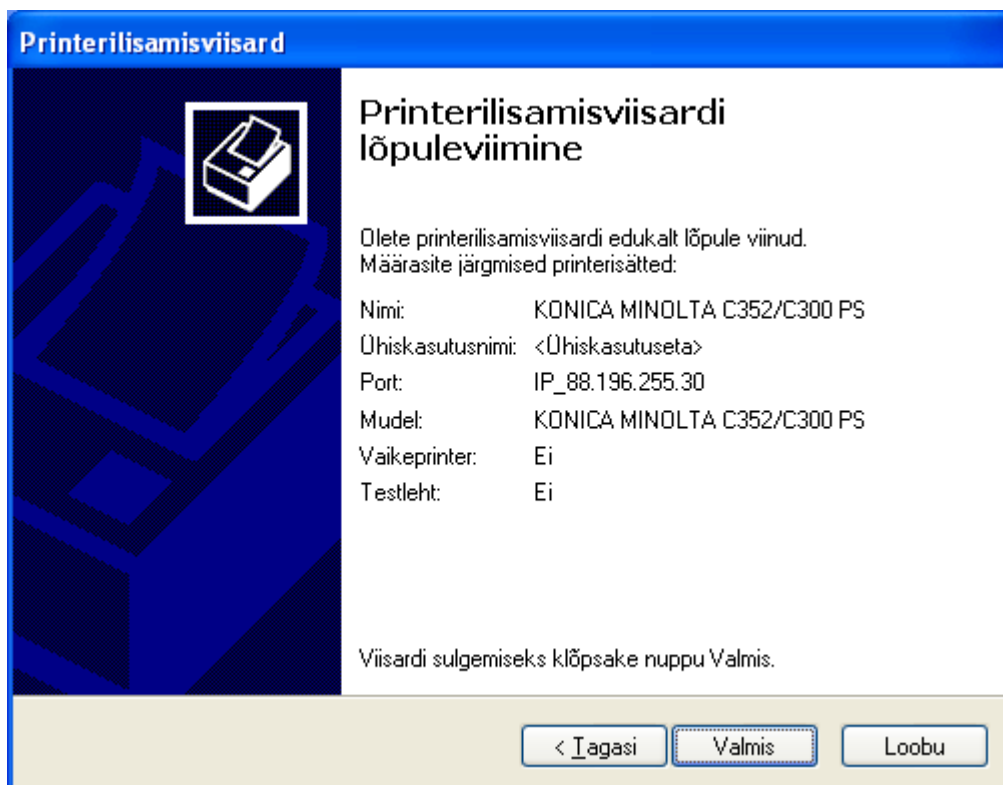
Ühiskasutusnimi: KONICAMI

< Tagasi Edasi > Loobu

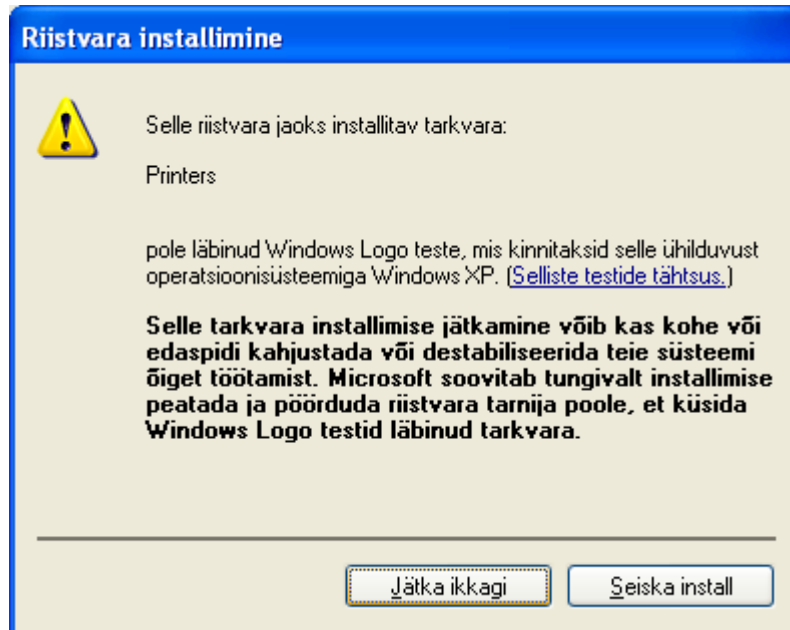
Valige kindlasti “Ei” ning vajutage “Edasi”



Vajutage “Valmis”



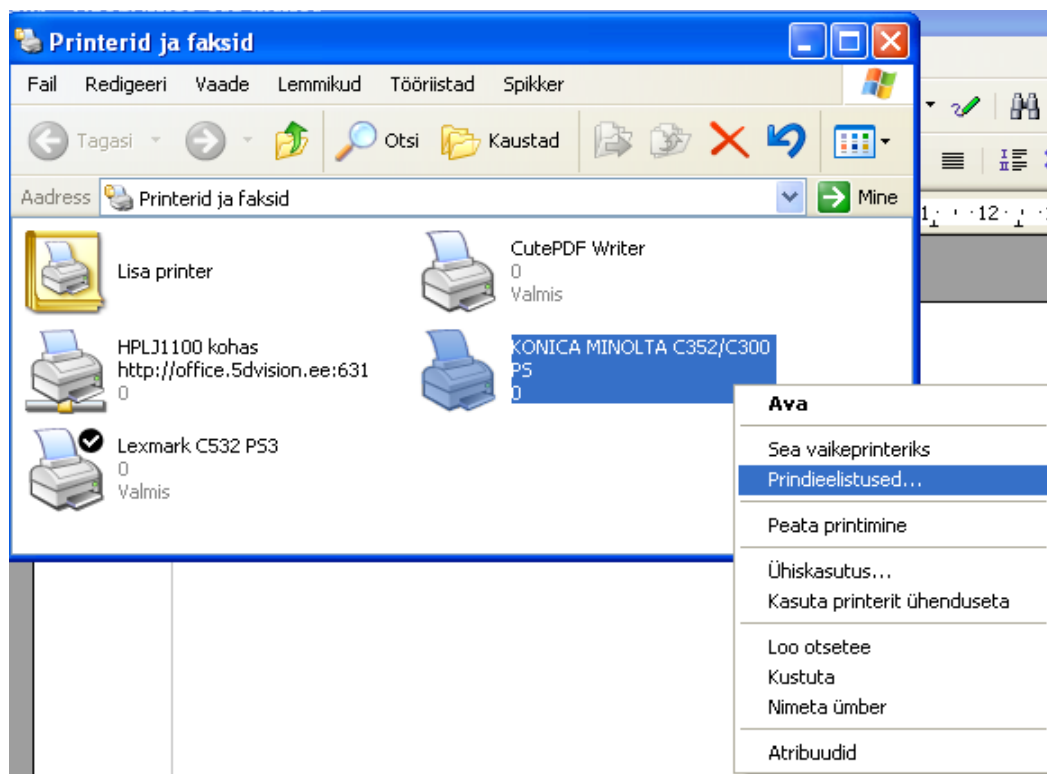
Kui tuleb ette Windows XP poolt hoiatus, valige “Jätka ikkagi”



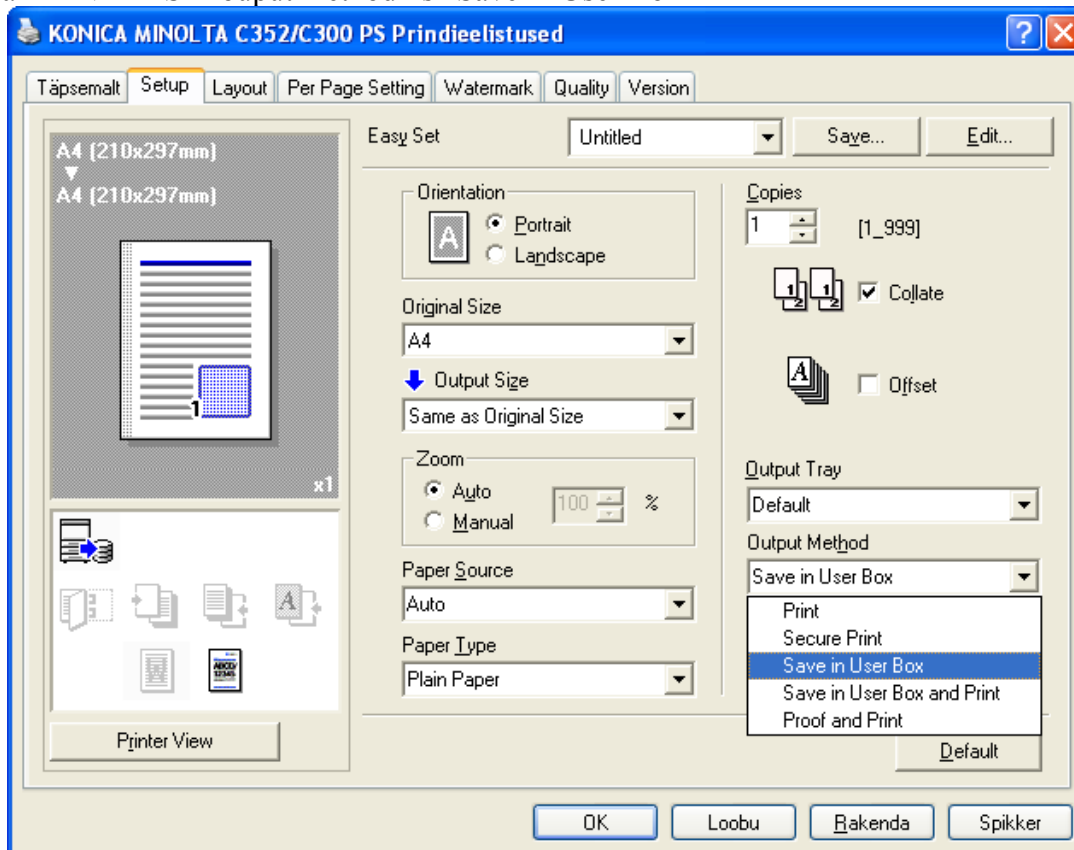
Oodake kuni draiver installitakse. Nüüd peaks printer installitud olema.

Printeri konfigureerimine.

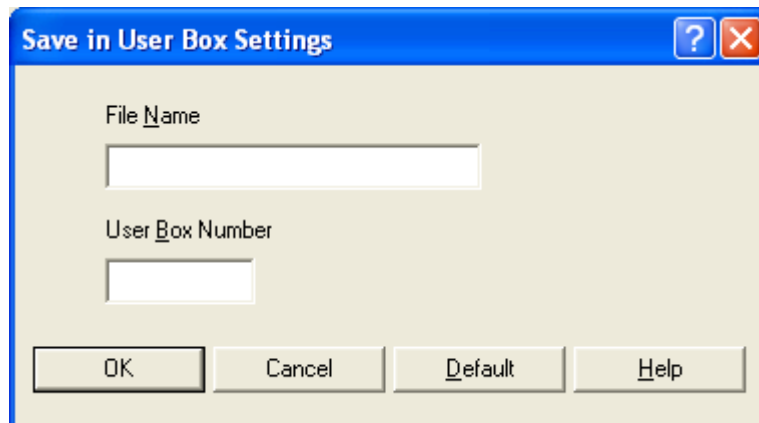
Vali printer parema klahviga ja vali "Prindieelistused"



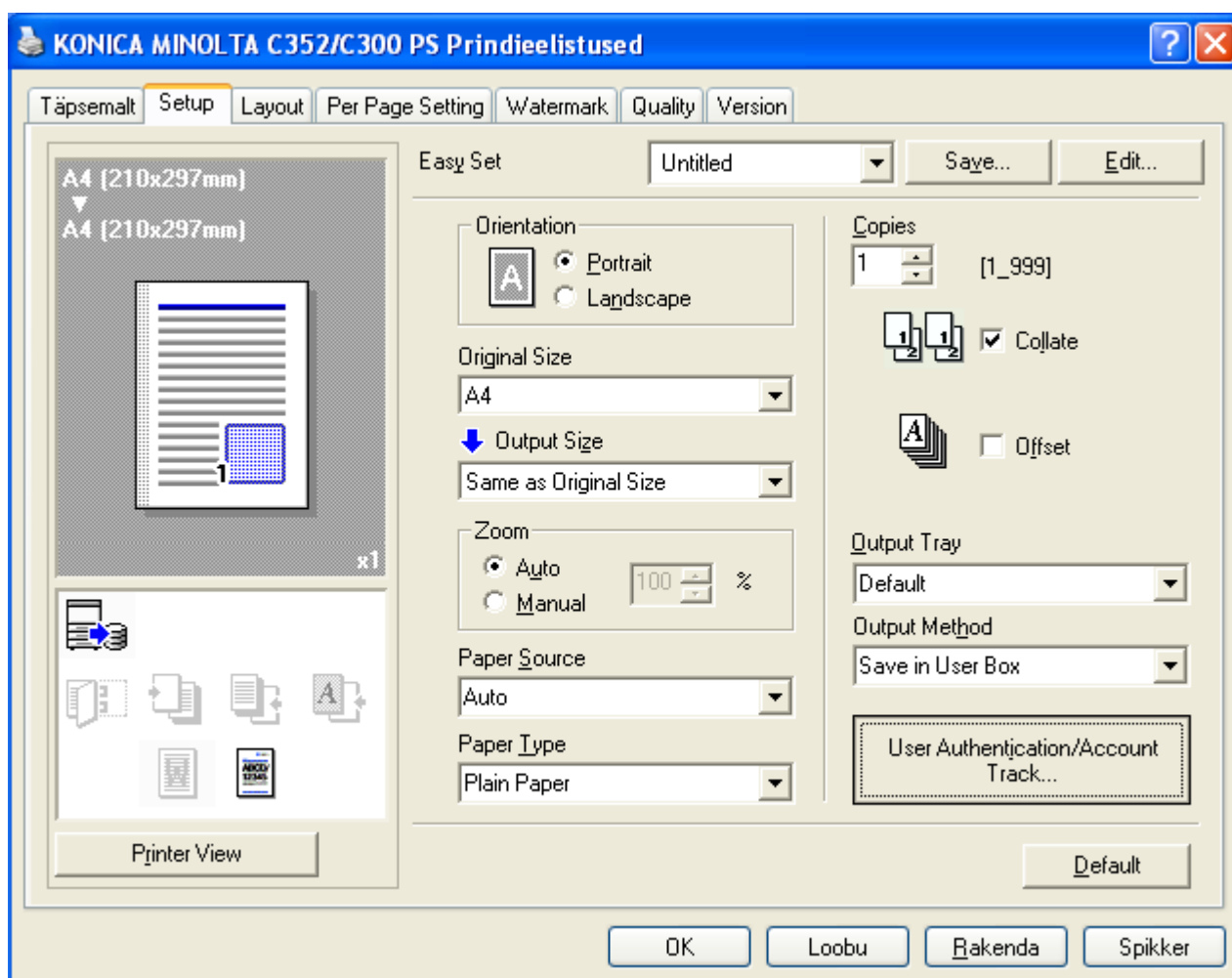
Edasi vali KINDLASTI output methodiks "Save in User Box"



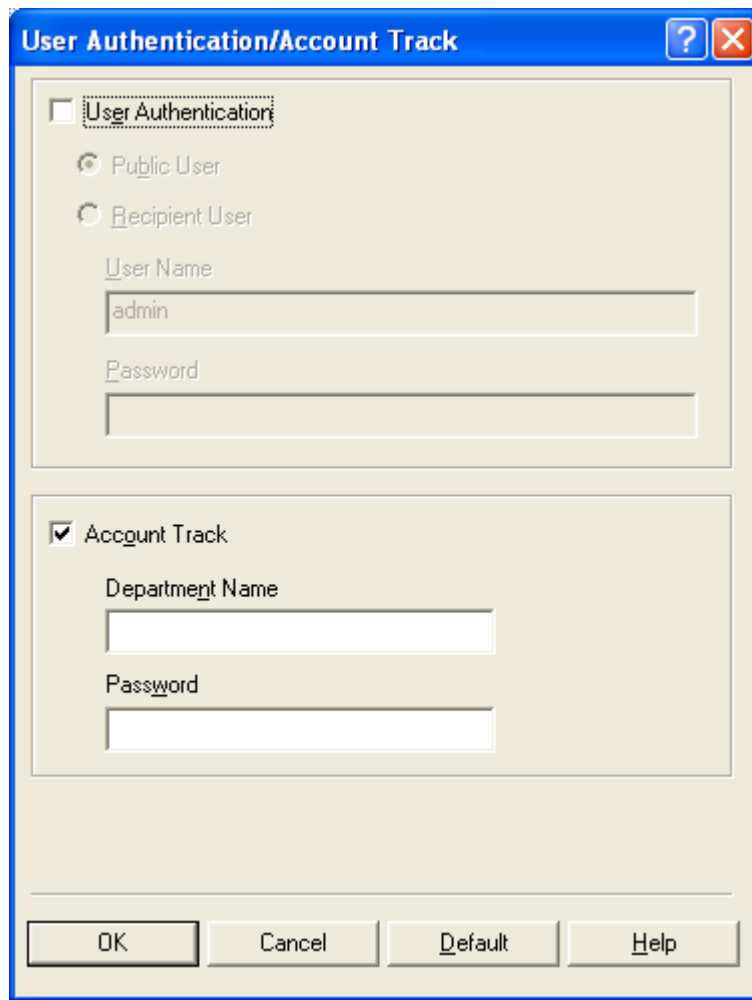
Ette tulevas aknas sisestage oma boxi number, faili nimi ei ole vajalik. Vajutage “OK”



Vajutage “User Authentication/Account Track...” nupu peale.



Tehke linnuke “Account Track” ees ja sisestage teile antud Department Name ja Password. Vajutage “OK”



The image shows a Windows-style dialog box titled "User Authentication/Account Track". It has a blue title bar with a question mark icon and a close button. The dialog is divided into two main sections. The top section is titled "User Authentication" and is currently unchecked. It contains two radio buttons: "Public User" (selected) and "Recipient User". Below these are two text input fields: "User Name" containing the text "admin" and an empty "Password" field. The bottom section is titled "Account Track" and is checked. It contains two text input fields: "Department Name" and "Password", both of which are empty. At the bottom of the dialog are four buttons: "OK", "Cancel", "Default", and "Help".

Printer edukalt konfigureeritud.